

Jeven

Top ventilation for top chefs

JLI exhaust hood





Table of Contents

Product description & Product code	3
Functioning principle, Parts	4
Dimensions	5
Positioning, Design Service	6
Exhaust air	7
Pressure loss & Sound data, Lights	8

We want to help you in design of ventilation by offering Jeven designer service to your disposal.

Design Service helps in design and makes unique proposal solution with Jeven products.

Contact us: jeven@jeven.fi
010 231 2030

JLI Exhaust Hood

PRODUCT DESCRIPTION

The Jeven JLI hood has been designed for light duty kitchens where exhaust-only hoods are needed or supply air units are impossible to install.

JLI hoods are equipped with filter units, damper plates and measurement taps.

JLI is equipped with special filter units, which are easy to wash in a dishwasher.

LIGHTS AND FILTERS

All Jeven hoods come equipped with lights. Standard JLI hoods are equipped with cyclonic JCE grease filters.

MATERIAL

The canopy's base material is stainless steel AISI 304. The side panels can be made of stainless steel (JLI-R) or laminated glass (JLI-S).

ACCESSORIES

Covering boards to enclose the area between the top of the hood and the ceiling.



PRODUCT CODE

JLI - R 2000 x 1500 x 540 - 1x315 - 1080m³/h - CB

Seinäateriaali
R= Stainless steel
S= Glass

Length

Width

Height

Number and size of the exhaust air connections

Exhaust air flow, m³/h

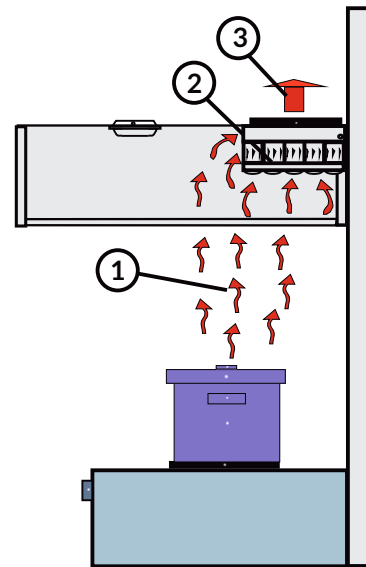
Accessories

CB=Covering boards

JLI Exhaust Hood

FUNCTIONING PRINCIPLE

1. Heat and impurities rise into the hood.
2. Grease particles are removed in the filter
3. Clean air is exhausted.



PARTS

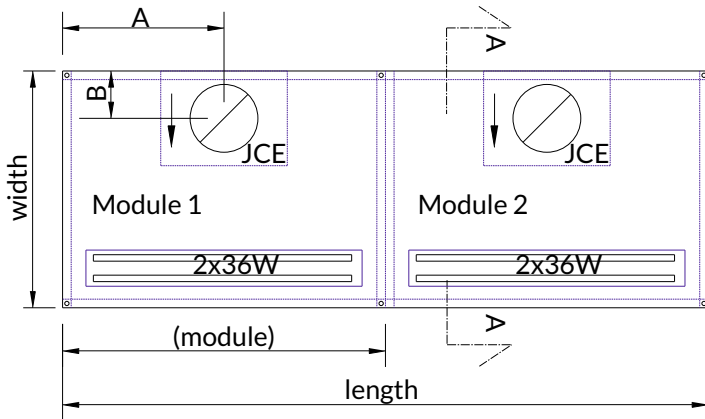
1. Outer casing
2. Light fixture with a cable
3. Grease filters and measurement tap for exhaust air
4. Exhaust air connection and damper plate
5. Ceiling console
6. Hanging bracket



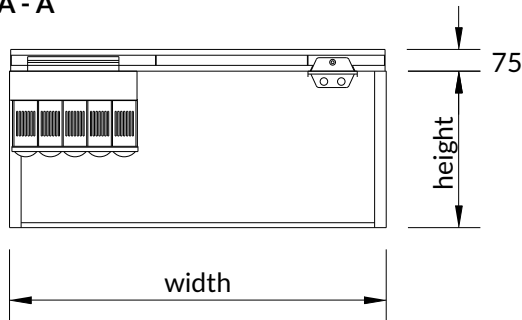
JLI Exhaust Hood

DIMENSIONS

Wall hood

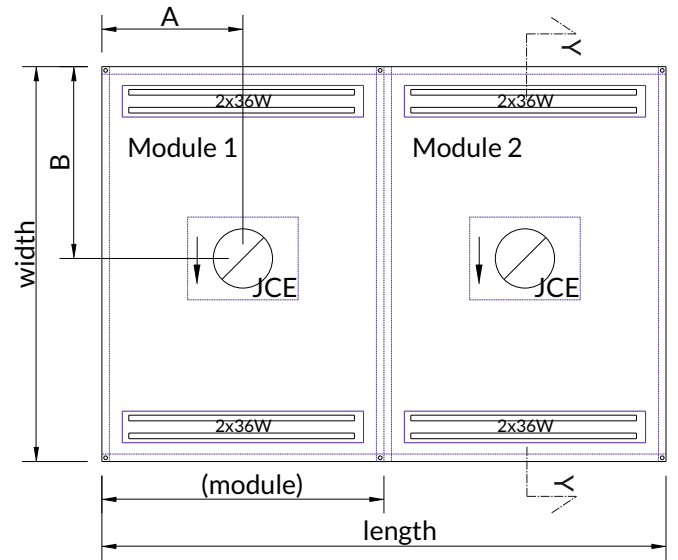


A - A

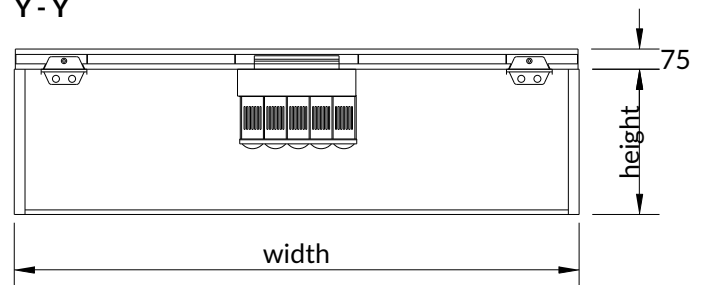


Hoods length, width and A, B-dimensions can be chosen freely.
 Max. module size is 3000mm x 1800mm.
 Filters require 440 mm of free space to open.

Island type hood



Y - Y



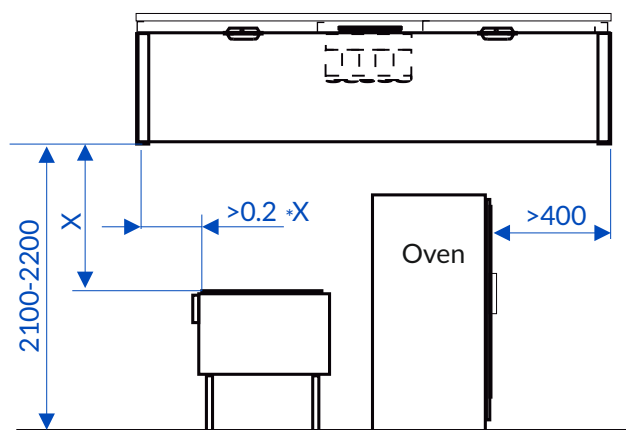
JLI Exhaust Hood

POSITIONING

The size of the canopy is determined by the size of the kitchen equipment. The overhang depends on the type of equipment and the distance between the hood and the equipment. For this type of equipment, the overhang should be at least 300 mm.

The typical distance between the hood side and the floor is 2100-2200 mm.

If the equipment has any doors that open upwards, make sure there is enough distance to the canopy.



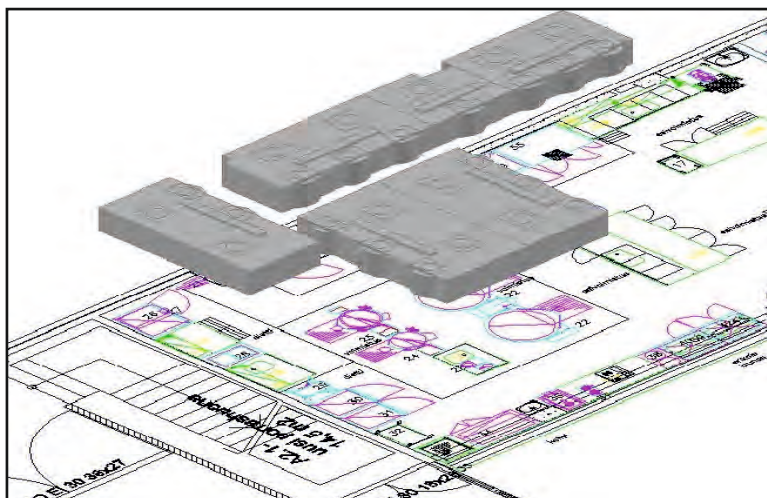
DESIGN SERVICE

Jeven Design Service helps you choose the best solution for your professional kitchen project.

Simply email us a drawing of the kitchen lay-out and a list of the cooking equipment to jeven@jeven.fi

We will do all the calculations and prepare all the necessary drawings of the canopies.

This service is always free of charge to you.



JLI Exhaust Hood

EXHAUST AIR

The recommended exhaust airflow rate is max. 340 l/s per 315 mm spigot, with a duct velocity of 4.4 m/s.

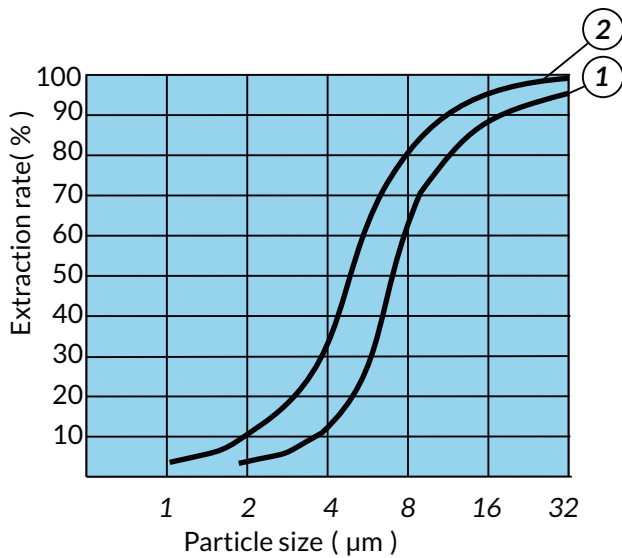
By default, the canopies come with a suitable number of filter units so that the pressure level will be between 40 and 60 Pa.

The nominal airflow of the filter units is 60 l/s per filter module.

Recommended exhaust flow / spigot

Spigot size \varnothing	Exhaust flow	
	l/s	m ³ /h
200	40 - 140	145 - 500
315	140 - 340	500 - 1225
400	340 - 530	1225 - 1910

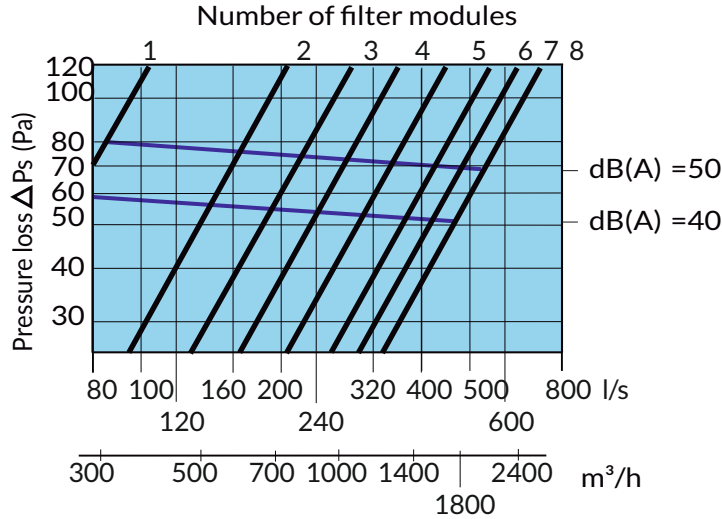
GREASE FILTER EXTRACTION RATE



- ① Pressure loss > 50 Pa
- ② Pressure loss > 200 Pa

JLI Exhaust Hood

PRESSURE LOSS AND SOUND DATA



Sound power level L_w in each octave band is computed by adding the corresponding factor, K_{ok} to the sound power level L_{pA} . $L_w = L_{pA} + K_{ok}$.

Factor, K_{ok}

Hz	125	250	500	1000	2000	4000
K_{ok}	6	5	4	-2	-9	-16
tol.	±3	±3	±2	±2	±3	±4

SOUND ATTENUATION

Exhaust
JCE-2, spigot = \varnothing 200 mm.
Sound attenuation, (dB)

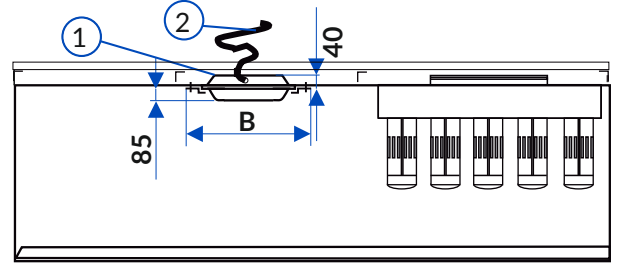
Hz	125	250	500	1000	2000	4000
"Damper closed"	12	7	7	10	10	10
"Damper open"	11	6	6	6	6	5

Exhaust
JCE-4, spigot = \varnothing 315 mm.
Sound attenuation, (dB)

Hz	125	250	500	1000	2000	4000
"Damper closed"	3	5	4	11	10	10
"Damper open"	2	4	3	6	4	7

The average sound attenuation includes the end reflection of the connection spigot.
It is recommended to use "damper open" values when calculating sound attenuation

LIGHTS



① Light fixture as standard IP 54-67

T8:
B=111mm, (1x18W, 1x36W, 1x58W)
B=168mm, (2x18W, 2x36W, 2x58W)

Colour temperature 840(Cool White)

② About 2m cable, type EKK 3x1,5

By default, every hood module comes with a light fixture. The light fixture has a cable which should be connected to a junction box with a cable lock. The junction box is not included.